



Antarctica Direct: Sail and Fly the Drake Passage

January 26 – February 4, 2027
Aboard National Geographic Explorer



SPECIAL AFFINITY GROUP SAVINGS OFFER



Dear Travelers,

Venturing to Antarctica is an expedition like no other—a chance to explore wonderlands of sculpted snow and ice where whales swim, penguins flock and albatross soar. It's a true journey of a lifetime that has historically called for multiple weeks of travel, including a round-trip sea crossing of the Drake Passage.

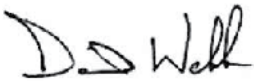
I am excited to share a more time-efficient way to discover the wonders of the White Continent without sacrificing any of the adventure: a 10-day itinerary with National Geographic-Lindblad Expeditions. Their sail and fly expedition takes you to Antarctica aboard *National Geographic Explorer*, allowing you to check off the expedition milestone of crossing the Drake Passage. After being immersed in Antarctica's spectacular icescapes, you'll return to South America via a quick two-hour flight.

Each day on the seventh continent is filled with new sights and sounds. Greet the southernmost sky with a sunrise stretch session, paddle a kayak past tabular icebergs the size of islands and walk among charismatic penguins. You'll even have the rare opportunity to peer deep into polar waters from the comfort and safety of the ship via a remotely operated vehicle (ROV). A veteran team of naturalists will be on hand to provide expert perspectives, and a National Geographic-Lindblad Expeditions certified photo instructor can help you capture incredible images.

Our tour operator for this program, Lindblad Expeditions, has been traveling to Antarctica for 60 years and has unmatched expertise in the region. They are uniquely skilled at bringing you directly into the heart of this icy region. Their polar captains all hold the "icemaster" distinction and have collectively navigated more than 600 expeditions in these icy waters, while the crew's deep knowledge of the Antarctic peninsula allows them to make the most of nature's opportunities. For travelers, this expertise translates to adventure-filled days and amazing wildlife sightings—experiences befit for the trip of a lifetime.

To reserve your place, please complete the reservation form, email groups@expeditions.com, or call 833-985-1261.

Warm regards,



David Webb
Director, Travel Program & Education
Washington University in St. Louis

Special Offer

Save 5% when traveling with Washington University in St. Louis. See page 12 for details.

Cover photo: Adult Adélie penguins lining up to leap off of an iceberg at Paulet Island in the Weddell Sea, Antarctica. Opposite: Guests enjoy icebergs at Booth Island by Zodiac.

WITNESS THE WONDER OF THE WHITE CONTINENT

Dazzling Beauty on a Grand Scale

The White Continent launches you into a unique world of marine wildlife, frozen landscapes and incredible geological formations. Spot ethereal albatross and other giant pelagic birds that glide and flit around us as we sail through the legendary Drake Passage. Watch for the telltale spout of orcas and acrobatic pods of leaping dolphins off the deck. Approaching the Antarctic islands, we float into an ice desert of crystalline air and frozen seas. Staggering in its variety of forms, the visual beauty of polar ice makes every Antarctic explorer vow to return.

Kayak and hike among Antarctica's most riveting, and often raucous, denizens: the Adélie, chinstrap and gentoo penguins. Whether courting, squabbling or fetching krill, their fascinating antics and adaptations to life on the ice are at once amusing and awe-inspiring. Zodiac cruise in search of leopard seals hauled out on the sea ice, then watch for the big dark eyes of Weddell seals popping their heads above the water. And explore lesser-known terrain. While the White Continent is famous for its snow, glaciers and icebergs, its rockier volcanic past is revealed at places like Edinburgh Hill, where columnar basalt juts out of the sea, and at the black-sand beaches of a submerged caldera called Deception Island.

Life on Board

When sailing on *National Geographic Explorer*, your time on board is as rewarding as your time on shore. Every detail—from the culinary delights to the soothing spa treatments sourced from our surroundings—is inspired by the beauty all around you. Watch orcas from the ship's bow in the icy air, then warm up in the chart room with a cup of hot cocoa. Or perch high atop the ship in the sun-drenched observation lounge, where you can fly over the polar scenery as it unfolds below. With a well-stocked library at arm's reach, you can read up on a comprehensive range of topics, from Shackleton's historic expedition to the migratory patterns of humpback whales.

Opposite page (clockwise from top): DAP Airline; guest taking in the views from the chart room; guests exploring by Zodiac have an extraordinary encounter with a spy-hopping humpback whale. ©Eric Guth.





THE QUINTESSENTIAL EXPEDITION SHIP

National Geographic Explorer is an ice-class expedition ship that truly lives up to her name. She embodies the expertise that Lindblad Expeditions has developed throughout 60 years of exploring Antarctica. This powerful yet intimately scaled vessel brings you directly, and safely, into the heart of this icy wilderness and allows you to experience it in unique and immersive ways. Her bow's low profile gives you an exhilarating vantage point, making you feel as though you're suspended over the glassy water. And you're always welcome to talk to the captain and officers on the Bridge, where you can learn the ins and outs of navigation or take a turn at the spotting scope.



Purpose-Built for Polar Exploration

- **DNV ICE-1A class rating** on the hull, enabling us to navigate the ice safely
- **Remotely Operated Vehicle (ROV)** that can explore the ocean at depths up to 1,000 feet
- **Crow's nest remote-controlled camera** with real-time footage broadcast on high-definition LCD video screens within each cabin
- **Electronic chart system** that broadcasts as a channel in the cabins
- **Chart room** with nautical maps and a coffee, tea and hot cocoa station
- **The Bridge** where you're always welcome with an open invitation from the ship's captain
- **Observation lounge** providing panoramic vistas of the scenery and a supply of binoculars
- **Large fleet of Zodiacs** and internal mechanism for swift, effortless boarding
- **36 double kayaks** that allow personal exploring in pristine Antarctic environments

Opposite (clockwise from top): National Geographic Explorer is designed with the utmost attention to safety and comfort; guests review nautical maps on the Bridge; Gulf Almirante Montt, Puerto Natales, Patagonia, Chile; kayaks allow for personal exploration. Above: Guests join officers on the Bridge to watch them navigate the ice.

EXPERIENCE AUTHENTIC EXPLORATION

Travel with a Veteran Team

Every staff member—from our naturalists and expedition leaders to our crew working behind the scenes—is committed to ensuring guests have an unforgettable experience. Many are veteran polar guides who have worked with us for decades, chosen for their extensive knowledge of subjects like geology, wildlife biology and climate science. They, along with the guest speakers who join us on board, give rich context to the wildlife and landscapes we encounter ashore.



The expedition staff helps guests board kayaks safely and swiftly.

Take Great Photos with the Pros

On a National Geographic-Lindblad Expeditions voyage, photography is never an afterthought—it's central to the expedition experience. A National Geographic photographer and a National Geographic-Lindblad Expeditions certified photo instructor join each voyage to assist travelers with everything from camera settings to composition. Every guest—from smartphone camera users to advanced hobbyists—can stand side by side with top photographers, pick up tips in the field and return home with the photos of a lifetime. With the complimentary OM System Photo Gear Locker, you can field test new lenses, camera bodies and more.



Guests photographing from a Zodiac in Paradise Harbor, Antarctica.



A guest marvels at landscape from aboard the ship.

Actively Explore Every Day

Our Antarctic voyages feature a range of activities designed to immerse you in the wilds of the White Continent. Head to the bow to watch for whale fins and flukes, paddle a kayak past a glittering iceberg or hike up a hillside for otherworldly views of the massive ice sheets. Zodiacs can zip you to the shore, where you can watch the adorable antics of fluffy Adélie and gentoo penguin chicks testing the waters and exercising their wings. Or join one of our polar experts in search of leopard seals among the brash ice. On board, learn more about the Heroic Age of Antarctic exploration from our historian, identify live birds next to expert birders or join your photo instructor at the deck rail for landscape photography tips. Each day opens new exploration options you can enjoy at your own pace.

In-Depth Undersea Program

As part of our in-depth undersea program, an undersea specialist uses a high-definition video camera and deploys a remotely operated vehicle (ROV) that allows us to peer through steely polar waters—up to 1,000 feet beneath the surface. Footage is shared during Daily Recaps, inviting guests to witness surprising and unexpectedly colorful sea life from the comfort and safety of our ship.



A curious adult leopard seal. ©Michael S. Nolan.

Itinerary

Crossing the Drake Passage is an explorer's milestone for many, but it can add several days to your travels. On this itinerary, experience the best of both worlds as you sail via ship to Antarctica and then return to Puerto Natales on a two-hour flight, saving time without sacrificing any of the adventure. Travel with a diverse team of experts aboard *National Geographic Explorer*. Venture into channels and coves framed by towering peaks. Watch for whales off the bow; Zodiac cruise around enormous icebergs; and hike and kayak in complete tranquility. Choose an active agenda or surrender to the pleasures of relaxing downtime and shipboard camaraderie. Plus, get top shots with the help of a professional photographer.

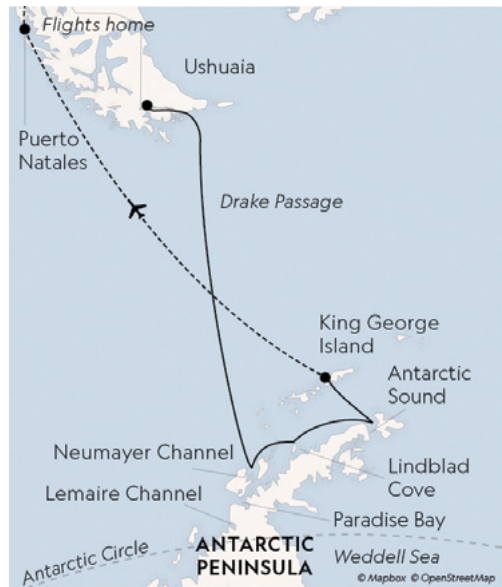
DAY 1: ARRIVE USHUAIA, ARGENTINA

Arrive in Ushuaia. Sandwiched between ice-mantled peaks and the frigid waters of the Beagle Channel, this wild place is fittingly known as “El Fin del Mundo” or “The End of the World.” Transfer from the airport to the hotel.

DAY 2: USHUAIA/EMBARK

Check out of the hotel and begin exploring this amazing region. Visit Tierra del Fuego National Park, clad in dense beech forest just as much of Antarctica was millions of years ago. Savor lunch on board

a private catamaran as you cruise the Channel, keeping an eye out for plump South American sea lions and sleek seabirds like the imperial cormorant. By day's end, you'll be comfortably on board the ship and ready to sail off to the White Continent. (B,L,D)



DAYS 3-4: AT SEA CROSSING THE DRAKE PASSAGE

At times turbulent, at others flat calm, this legendary 500-mile-wide strait divides South America from the Antarctic Peninsula. Feel the excitement build as you begin the crossing, often accompanied by seabirds like the wandering albatross and—if luck allows—a pod of killer whales or rare dolphins. Get to know the ship and prepare for the adventures ahead. Visit the Bridge (ideal for wildlife spotting), relax with a massage, attend a talk on the unique biology of penguins or simply settle into a comfy chair in the observation lounge, looking out over the waves as you contemplate the history of this passage named for English privateer Francis Drake, but first discovered by Spanish navigator Francisco de Hoces. (B,L,D)



Guests exploring by Zodiac in Antarctica.

DAYS 5-8: EXPLORING ANTARCTICA

With long hours of daylight at this time of year, you'll have ample opportunities to explore. The schedule is flexible, allowing you to take advantage of the unexpected, whether you're watching whales at play off the bow of the ship, hiking alongside penguin highways or enjoying an evening Zodiac cruise amid porpoising penguins. While wildlife is magnificent, ice defines the Antarctic. You'll get to know ice up close and personal—from icebergs the size of islands, bergy bits and near-vertical glaciers, to the fragile, nearly invisible layers that have just begun to freeze. One day, you might set out by kayak to encounter towering icebergs at water level; embark on a Zodiac excursion in search of seals and blue-eyed shags; or walk amid thousands of Adélie and gentoo penguins. The next, you might experience the thrill of the ship crunching through pack ice. Everywhere you go in Antarctica you're surrounded by opportunities to capture uniquely beautiful images. Along the way, your expert expedition team will enrich every experience. (B,L,D)

DAY 9: KING GEORGE ISLAND/DISEMBARK/CHARTER FLIGHT TO PUERTO NATALES, CHILE

This morning finds you off of King George Island. Home to a diverse assortment of wildlife including Weddell and elephant seals, Adélie, chinstrap and gentoo penguins, this island also has a human presence. Researchers from a wide range of countries, including the U.S., Chile, Argentina and Brazil, call the various stations home. Disembark and Zodiac ashore to board our 2-hour flight back to Puerto Natales where you will overnight. (B,L,D)

DAY 10: PUERTO NATALES/HOMEBOUND FLIGHTS

Check out of the hotel and transfer to the airport to begin your journey homeward. (B)

Please note: Timing of flights to/from King George Island are weather dependent. Refer to www.expeditions.com/landing/fly-the-drake-faq for more details.



A chinstrap penguin burrowed in the snow.

National Geographic Explorer



Designed for in-depth exploration, she is the definitive expedition ship, capable of navigating both polar passages and temperate waters. Fully stabilized and with an ice strengthened hull, she provides exceptional comfort, while her dynamic suite of exploration features—including an interactive chart room, a high observation lounge and a low-profile bow with dramatic views—reflect a dedication to curiosity and wonder.

Capacity

81 outside cabins and suites accommodating 148 guests.

Registry	Overall Length
Bahamas.	367 feet.

Public areas

Bistro bar; chart room; restaurant; Global Gallery; library; lounge with photo kiosks, full-service bar and facilities for films, slideshows and presentations; mudroom with lockers for expedition gear; OM System Photo Gear Locker; laundry; and observation lounge. An open Bridge enables guests to meet the captain and officers and learn about navigation.

Meals

Served in single seatings with unassigned tables for an informal atmosphere. Menu is international with local flair.

Accommodations

All cabins and suites face outside with windows or portholes, and have a private bathroom and climate controls. Equipped with Wi-Fi, multiple electrical outlets, USB outlets, full-length mirror and phones.



Category 7 suite with balcony.

TV featuring entertainment on demand, live feed from onboard presentations, bow camera and ship's position. Luxury bed linens and pillows. Botanically inspired shampoo, conditioner, shower gel and lotion. Newly updated suites are enhanced with a sleek, Scandinavian design, and hold a Command Center that allows guests to explore from the comfort of their rooms. Command Centers include a barometer, a *National Geographic Atlas* and an espresso maker.

Expedition Equipment

Zodiacs, kayaks, Remotely Operated Vehicle (ROV), hydrophone, splash-cam, underwater video camera, crow's nest remote-controlled camera, video microscope.

Staff & Crew

Every staff member is committed to ensuring guests have an unforgettable experience. Many of the veteran guides and naturalists are locally based in your destination and have worked with the company for decades. A full-time medical professional, undersea specialist, National Geographic photographer and a certified photo instructor are on board, and with a high staff-to-guest ratio, you can hear different perspectives and gain new insights every day.

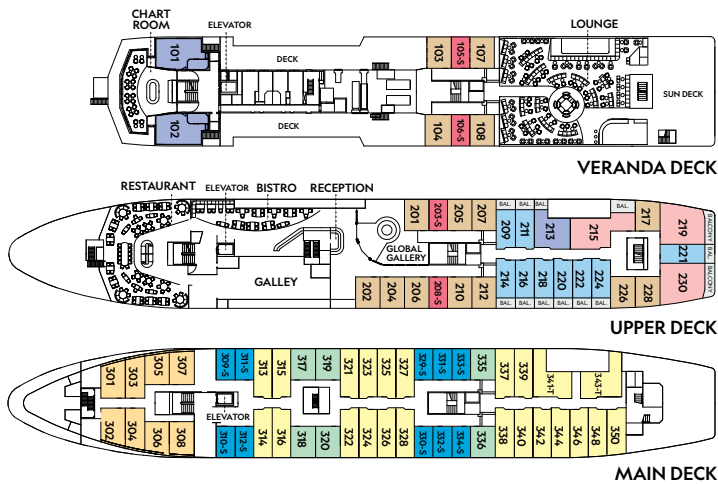


Fitness center with panoramic views.

Wellness

The vessel is staffed by a wellness specialist and features a glass-enclosed fitness center, outdoor stretching area, LEXspa treatment room and sauna.

Ship Deck Plan & Pricing



Voyage Dates

January 26 – February 4, 2027

Note: Prices below include the charter flight from King George Island to Puerto Natales. The 5% group savings is not applicable to the included charter airfare cost of \$1,500.

Advance Payment Details

15% of the cabin fare, per person

Costs are per person, double occupancy unless indicated as solo.		5% Savings
Category 1	\$15,880	\$15,161
Main Deck – With one or two portholes #301-308		
Category 2	\$17,530	\$16,729
Main Deck – With window #317-320, 335-336		
Category 3	\$17,990	\$17,166
Main Deck – With window #313-316, 321-328, 337-344, 346, 348, 350		
Category 4	\$19,150	\$18,268
Upper & Veranda Decks – With window #103-104, 107-108, 201-202, 204-207, 210, 212, 217, 226, 228		
Category 5*	\$23,310	\$22,220
Upper Deck – With balcony #209, 211, 214, 216, 218, 220-222, 224		
Category 6*	\$26,690	\$25,431
Veranda Deck – Suite #101-102; Upper Deck-Suite with balcony #213		
Category 7*	\$29,220	\$27,834
Upper Deck – Suite with balcony #215, 219, 230		
Category A Solo	\$22,550	\$21,498
Main Deck – With window #309-312, 329-334		
Category B Solo	\$25,730	\$24,519
Upper & Veranda Decks – With window #105-106, 203, 208		

***Suite Exclusives:** The Suite Exclusives package gives guests staying in eligible cabins access to an array of amenities designed to enhance your on-board experience, including priority booking for spa treatments, complimentary laundry and other exclusive perks.

Shared Accommodations: Available in Categories 1 and 2.

Solo Occupancy: Cabins available in Categories A and B.

Note: Cabins #209, 211, 214, 216-218, 220, 222, 224, 226, 228, 303-306 have one queen-size bed. All other double cabins have two single beds; some can convert to a queen-size bed. Third person rates are available in the designated triple occupancy cabins at one-half the double occupancy rate. Cabins #341, 343, 101, 102, 215, 219 and 230 can accommodate a third person.

INCLUSIVE PRICING

- Charter flight from King George Island to Puerto Natales, Chile
- All accommodations aboard ship
- Excursions, hotels and airport transfers, as indicated in the itinerary
- All meals as indicated in the itinerary, both aboard and on shore. Meals and hors d'oeuvres are inspired by regional cuisine and locally sourced where possible
- Beer, wine, cocktails and spirits, with premium wines and liquors available for purchase
- 24-hour access to snacks, premium coffees and teas, non-alcoholic beverages and filtered water
- Selection of exploration tools such as Zodiacs, kayaks and other gear
- Guidance and company of our leading expedition staff
- Presentations by the expedition staff
- Access to the OM System Photo Gear Locker with the latest gear to try out on loan
- Gratuities for the ship's crew
- The services of a medical professional
- Morning stretch classes and 24-hour access to the fitness center
- 24-hour access to lounges, observation decks, library and other shared spaces
- Complimentary parka and reusable water bottle
- Special access permits, park and site entrance fees and port taxes

TAKE ADVANTAGE OF SPECIAL OFFERS

SPECIAL AFFINITY GROUP SAVINGS: Save 5% on the cabin fare (as indicated) when traveling with Washington University in St. Louis. Valid on this departure date of *Antarctica Direct: Sail and Fly the Drake Passage*. For new bookings only, subject to availability, may not be combined with other offers and is not applicable on airfare or extensions. Call for details. Please note: the 5% savings is not applicable to the included charter airfare cost of \$1,500.

BRINGING THE KIDS: Sharing the expedition with your kids or grandkids is a life-enhancing experience. Take \$500 off the double-occupancy price for each person under the age of 18 at the time of travel. Not applicable on extensions or airfare.

TERMS AND CONDITIONS

Prices quoted in this brochure are per person based on double occupancy in USD. Prices quoted are valid at the time of printing, and are subject to change and availability at time of booking. Under normal conditions the total expedition price is guaranteed at the time advanced payment is made. However, our expedition pricing is determined far in advance of initial departure on the basis of then-existing projections of fuel and other costs. In the event of increases in those costs, including but not limited to increases in the price of fuel, currency fluctuations, increases in government taxes or levies or increased security costs, we reserve the right to adjust the price of your expedition or add a surcharge to cover such unexpected increases. We will always provide an explanation of the reason for increase in costs.

COST INCLUDES: All amenities listed in inclusive pricing above. Unused services or items included in this program are non-refundable.

NOT INCLUDED: International airfare; additional hotel nights unless otherwise noted; pre- and post- extensions if available; private transfers; travel protection plan; passport, visa and immigration fees; items of a personal nature, such as laundry, spa treatments, certain premium wines and liquors and Wi-Fi and phone services. For select voyages, completing a medical evaluation form with VIKAND is required. If you utilize your physician, VIKAND's processing fee for your documentation will be added to your National Geographic-Lindblad Expeditions invoice. If you utilize VIKAND's physicians, an additional charge will be due and payable directly to VIKAND.

AIRFARE: The charter flight from King George Island to Puerto Natales, Chile is included. International airfare is an additional cost. Lindblad will assist in making your air arrangements for a \$50 per person service fee. **Due to the unpredictable weather in Antarctica, we highly encourage guests to book their international flights through Lindblad Expeditions' air department, who can assist with rescheduling flights if needed.**

RESERVATIONS: To confirm your place, an advance payment of 15% of the cabin fare, per person is payable by Visa, MasterCard, American Express, Discover or check. Receipt of advance payment indicates your acceptance of the terms and conditions.

FINAL PAYMENT: Due 120 days prior to departure. Lindblad Expeditions reserves the right to cancel your reservation if payment has not been received by final payment due date.

TRAVEL PROTECTION PLAN: Travel and medical insurance are recommended and are available at an additional cost. For more information, contact the WashU Alumni Association Travel Program office at 314-935-0474 or alumni.travel@wustl.edu.

ITINERARY MODIFICATIONS: Itineraries, routing and speakers listed are correct at time of publication and are subject to change.

ENTRY AND VISA REQUIREMENTS: Guests are advised to verify travel documents (passport/transit visa/entry visa) for the country(s) through which they are transiting and/or entering. Reliable and most current information regarding international travel can be found by contacting the consulate/embassy of the country(s) you are visiting or transiting through. We will not be responsible if you are denied entry or transit into a country if you are unable to provide valid documents as per the country's requirement.

RESPONSIBILITY AND OTHER TERMS & CONDITIONS: Certain other provisions concerning, among other things, limitations of Lindblad Expeditions' and National Geographic Expeditions' (a division of National Geographic Partners, LLC) liability for loss of property, injury, illness or death during the voyage will be provided to all guests on the ship's ticket sent prior to departure or upon request. By registering for a trip, the guest agrees to all such terms and conditions.

CANCELLATION FEE POLICY (PER PERSON)

120 or more days prior to expedition start: **No penalty:** Advance Payment will be credited toward your next expedition**

119-90 days prior to expedition start: **50% of trip cost*****

89-0 days prior to expedition start: **100% of trip cost*****

**Advance payments will be credited in the form of a Lindblad Expeditions Travel Certificate, valid for 12 months from the date of cancellation, and which may only be applied towards final payment on any future booking.

***Trip cost is total price paid including extensions, charter airfare and other additional services.

We strongly recommend that you purchase a travel protection plan.

Photo Credits: Sisse Brimberg & Cotton Coulson, Stewart Cohen, DAP Airline, Eric Guth, Ralph Lee Hopkins, Michael Luppino, Michael S. Nolan, Ryder Redfield, Douglas Scaletta, Joseph Seif, Shutterstock.

Reservation Form



Antarctica Direct: Sail and Fly the Drake Passage

January 26 – February 4, 2027

ABOARD NATIONAL GEOGRAPHIC EXPLORER

Contact Information

Please send reservation to:

National Geographic-Lindblad Expeditions
11 West 42nd Street, 22nd Floor
New York, NY 10036

Ph: (833) 985-1261

Fax: (646) 390-2050

Email: groups@expeditions.com

Passenger Information

Please reserve _____ place(s).

Guest 1: _____
(Name as it appears on passport)

Date of Birth: _____

Guest 2: _____
(Name as it appears on passport)

Date of Birth: _____

Street Address: _____

City: _____ State: _____ ZIP: _____

Home Phone: _____ Cell Phone: _____

Email: _____

Accommodations: ☐ Double ☐ Single ☐ Twin share with a friend
☐ Share with roommate assigned by tour operator.

Please indicate choice of cabin category in order of preference:

1st choice: _____ 2nd choice: _____

Advance Payment Information: 15% of the cabin fare per person.

☐ If paying by check, please make payable to: **Lindblad Maritime Enterprises, Ltd.**
Enclosed is my advance payment of \$ _____

☐ If paying by credit card, we will contact you to finalize your booking and collect payment information.

Antarctica Direct: Sail and Fly the Drake Passage

EXPEDITION HIGHLIGHTS

- Experience it all—cruise the legendary Drake Passage aboard the *National Geographic Explorer* and then enjoy the ease of returning on our 2-hour direct flight from King George Island to Puerto Natales.
- Explore the world's last great wilderness in the company of a team of top naturalists celebrating 60 years of expedition heritage.
- Hike amid magnificent mountains; see huge glaciers; and observe a parade of gentoo, Adélie, and chinstrap penguins.
- Kayak in protected waters, paddling in the Antarctic stillness as penguins swim nearby.



Alumni Association Travel Program
MSC 1210-414-3300
Washington University
1 Brookings Dr.
St. Louis, MO 63130

LINDBLAD EXPEDITIONS: PIONEERING RESPONSIBLE EXPLORATION

From our consistent quest to improve our practices to offsetting 100% of our carbon emissions, supporting conservation, science, and education initiatives around the planet and investing in the communities in the places we explore, we are guided by our commitment to explore responsibly.

PRSRT STD
U.S. POSTAGE
PAID
LINDBLAD
EXPEDITIONS



Printed on 10% recycled content paper with soy-based inks.
We recommend that you pass this along for others to enjoy or recycle.

GRP-WASHU-CRZF27